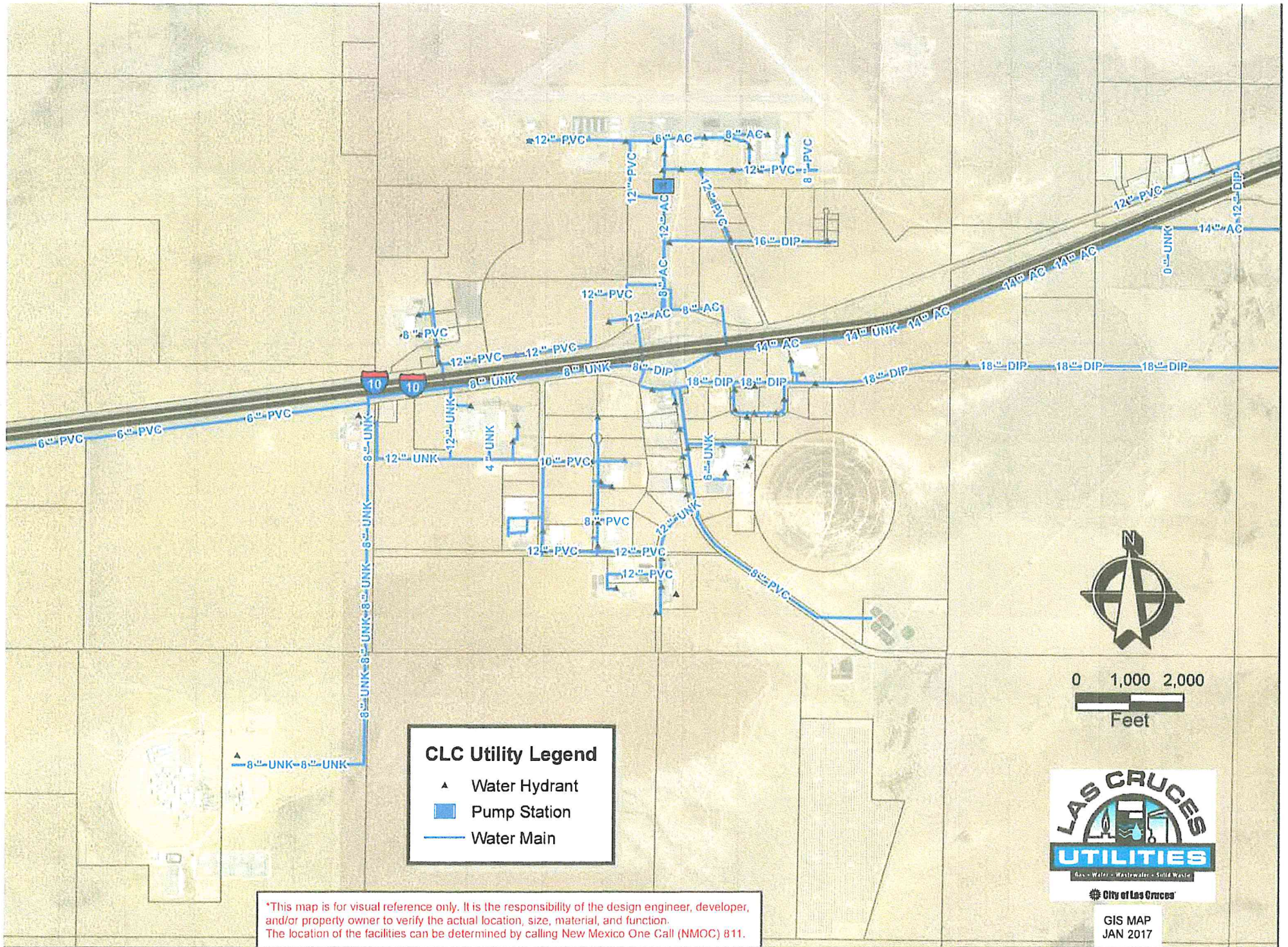
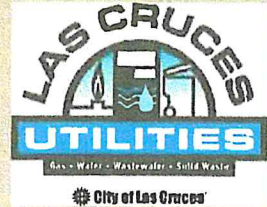


Water	
Provider	City of Las Cruces Utilities Department
Water Main	
Size	8" to 18"
Distance to Site	see attached map
Static Pressure	50 psi to 75 psi
Residual Pressure	site specific, depends on flow
Flow per Minute	site specific, depends on requirement
Treatment Plant	City of Las Cruces Utility Department does not have water treatment plant.
Rated Capacity (mgd)	N/A
Peak Demand (mgd)	N/A
Booster Pump Required	site specific
Onsite Storage	for entire West Mesa Industrial Park
Elevated	500,000 gallons elevated tank; 400,000 gallons ground tank
Capacity in Gallons	see response under "Elevated"
Sewer	
Provider	City of Las Cruces Utilities Department
Sewer Main	
Size	8" to 15" gravity lines
Distance in Feet from Site	see attached map
Use of Lift Required	depends on site
Treatment Plant	
Type	aerated lagoons with land application
Rated Capacity (mgd)	400,000 gallons per day (gpd) total capacity; 130,000 gpd available capacity
Peak Demand (mgd)	see response under "Rated Capacity"



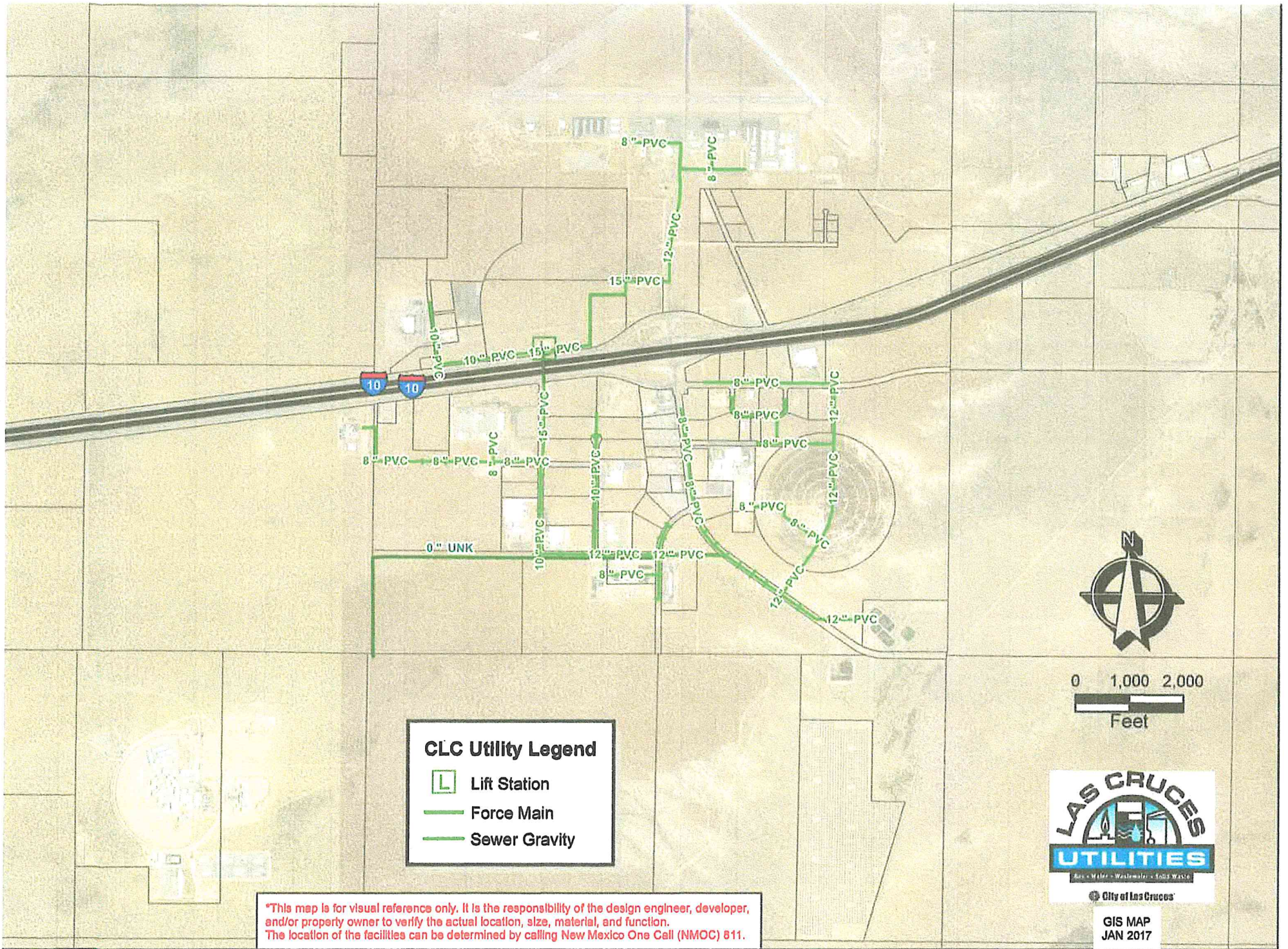
CLC Utility Legend

- ▲ Water Hydrant
- Pump Station
- Water Main






*This map is for visual reference only. It is the responsibility of the design engineer, developer, and/or property owner to verify the actual location, size, material, and function. The location of the facilities can be determined by calling New Mexico One Call (NMOC) 811.

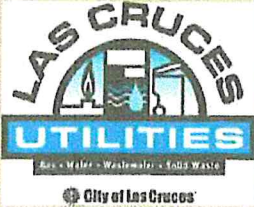
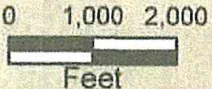
GIS MAP
JAN 2017



CLC Utility Legend

-  Lift Station
-  Force Main
-  Sewer Gravity

**This map is for visual reference only. It is the responsibility of the design engineer, developer, and/or property owner to verify the actual location, size, material, and function. The location of the facilities can be determined by calling New Mexico One Call (NMOC) 811.*



**GIS MAP
JAN 2017**