



Phase II MS4 Program

Annual Report
Year 10
July 1, 2017 to June 30, 2018



**FLOODPLAIN
STORMWATER**

Public Works
Project Development
700 North Main Street Las Cruces, New Mexico 88001
www.las-cruces.org/stormwater

Table of Contents

Table of Contents	2
MS4 Annual Report Permit Information	3
U.S. Census, 2016 Las Cruces Population.....	4
Annexation Map.....	5
BMP Summary and Summary Tables.....	7
Implementation Status	14
Signature of Permittee.....	18
Recycling Data.....	22
Great American Cleanup Data	23
Water Conservation/Lush and Lean Presentations-2018.....	24
Weather Stations	25
Media Distribution	34
Codes Enforcement Data	37
MS4 Presentation Update	38
Figure 1: Population of the City of Las Cruces from the U.S. Census Bureau	4
Figure 2: CLC Annexation History by Decade.....	5
Figure 3 Urbanized Area/Storm Drain.....	6
Figure 4: Outreach Bus Banner Design	19
Figure 5: New Mascot TADD.....	19
Figure 6: CLC staff present floodplain model and watershed activities to students.	20
Figure 7: Bohannon Huston Stormwater survey Phases 1-4	21

MS4 Annual Report Permit Information

A. Permittee Information

Permit Number: NMR040000

Permittee: City of Las Cruces

Mailing Address: 700 North Main Street

City, State and Zip Code: Las Cruces, New Mexico 88001

Have any areas been added to the MS4 due to annexation or other legal means?

No

B. Reporting Period July 1, 2017 to June 30, 2018

C. Program Areas (Attachments)

As an attachment, address each of the following items for each of the six program areas (public education, public participation/involvement, illicit discharge detection and elimination, construction, post-construction, and good housekeeping for municipal operations.) The status of each program area must be addressed, even if the program area was completed and fully implemented in the previous reporting year. Help on the items is included in italics.

If another entity does not have its own permit but is instead covered under your permit, the Annual report information under Section C must also be provided for each such entity. (Depending on the size of the MS4 and the complexity of the programs, the attachments for this section will likely comprise 1 to 5 pages per program area.)

U.S. Census, 2016 Las Cruces Population

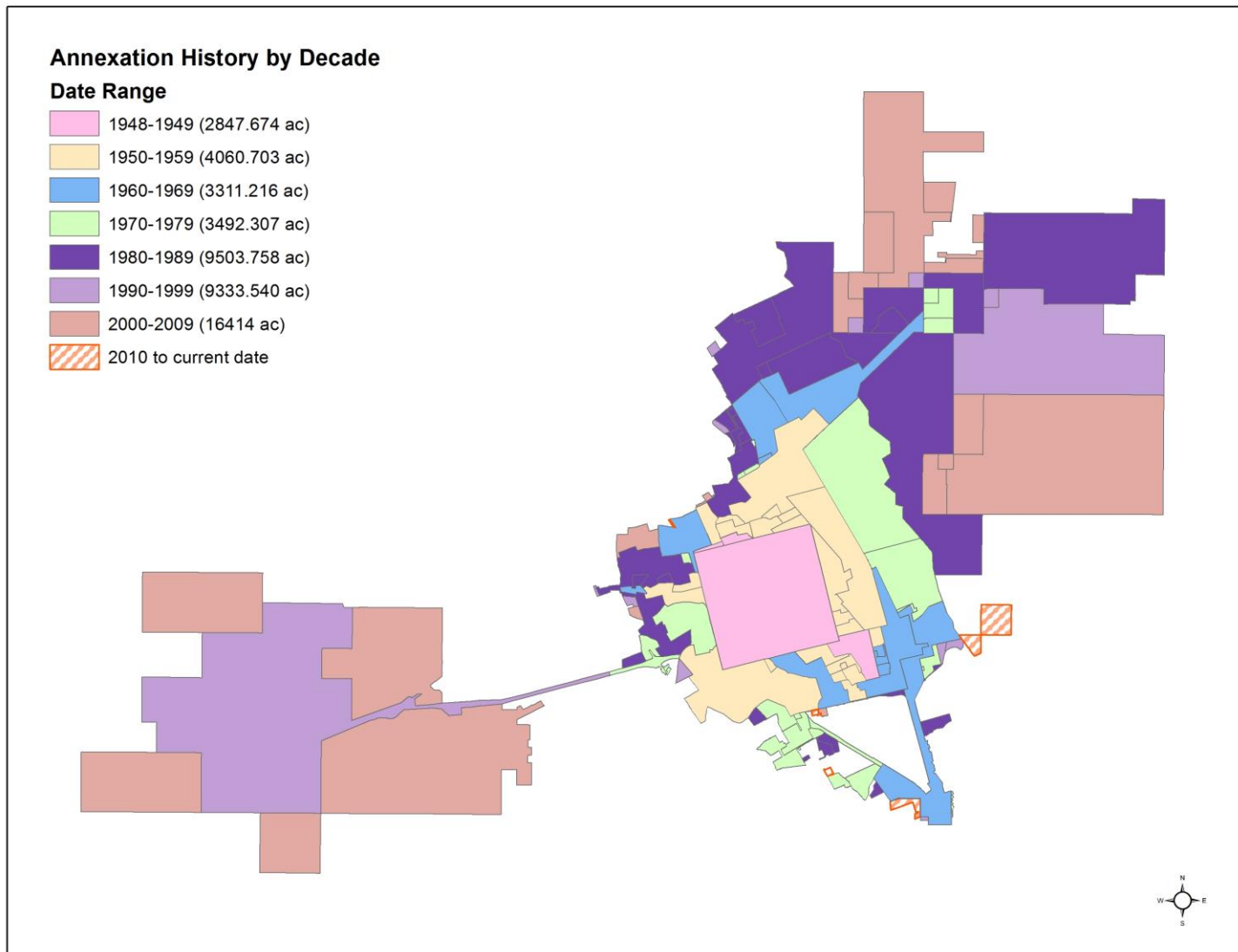
<http://worldpopulationreview.com/us-cities/las-cruces-population/>

Year	Population	Growth	Growth Rate
2017	101,712	739	0.73%
2016	100,973	235	0.23%
2015	101,738	-147	-0.15%
2014	100,885	8	0.01%
2013	100,877	-29	-0.03%

Figure 1: Population of the City of Las Cruces from the U.S. Census Bureau

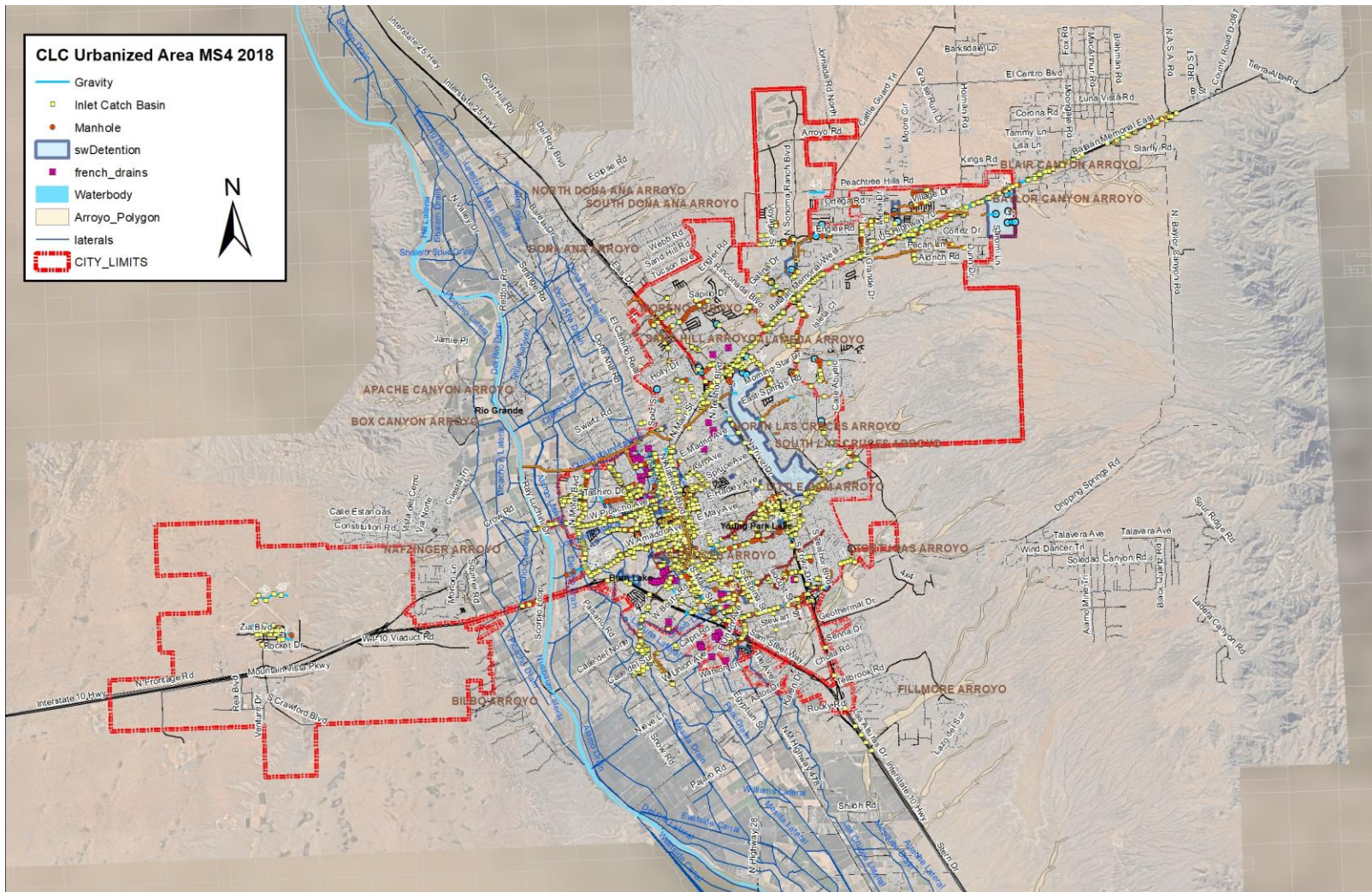
Annexation Map

Figure 2: CLC Annexation History by Decade



City of Las Cruces MS4

Figure 3 Urbanized Area/Storm Drain



The City must show measurable goals and improvement in six minimum areas. Record of these results and improvements will be the responsibility of each city department. Each control measure is listed below with the corresponding 1st year tasks (BMP) and the status of the BMP.

BMP Summary and Summary Tables


*(*Items marked in blue are new for the permit year)*

*(*Items marked in red have not been implemented)*

*(*Items marked in black are standard procedure)*

MCM #1 Public Education and Outreach on Storm Water Impacts.

BMP/YEAR 10	STATUS/DESCRIPTION
BMP 1.1 Development of Educational Materials Revise and update materials as needed.	<i>A new mascot character was developed for stormwater/flooding. TADD Turn Around Don't Drown.</i>
BMP 1.2 Community Events National Night Out 9/9-10/17 LC Christmas Tree Lighting 12/2/17 Water Festival, 4/19/18 Career Day, LCPS 5/11/17	Various events were held throughout the city to clean up trash and bring awareness to stormwater pollution. Stormwater pollution prevention outreach activities were provided to the community. Interactive models of a watershed and floodplain were used to teach students and the public about pollution prevention and urban stormwater runoff.
BMP 1.3 Billboards Public Service Announcements	<i>A bus banner was designed and will be displayed on the side of a local Roadrunner transit bus.</i> The banner is 172"x42" and will be poster for 2 months.
<ul style="list-style-type: none"> • BMP 1.4 • Las Cruces Public Schools Outreach • Schedule school presentations as feasible 	<i>Presentations on watershed and floodplain management were given to 3rd 4th and 5th grade elementary schools.</i>
BMP 1.5 Distribute brochures w/business registration	Brochures are handed out with business registration for the auto and restaurant industry. Brochures have useful information such as grease management (F.O.G.), recycling oil and stormwater pollution prevention.

<p>BMP 1.6 Construction General Permit (CGP) Workshop CGP Training-NMED 3/21/18</p>	<p>Training was provided to construction, municipal and community citizens for Construction General Permit (CGP)/SWPPP requirements.</p>
<p>BMP 1.7 Education material at City Hall</p>	<p>Education material is available at City Hall, Public Works, and various departments.</p>
<p>BMP 1.8 If appropriate, use DVD for employee training and public education</p>	<p><i>Ground Control, SWPPP for Construction Sites</i> by Excal Visual, <i>From Sea to Summit, A Journey through the Watershed</i> by Surfrider Foundation and <i>After the Storm</i> by the Weather Channel are DVDs used for training and education purposes.</p>
<p>BMP 1.9 If other entities participate, develop and education program targeted at possible bacteria sources in the watershed.</p> <p>Watershed Cooperative</p> 	<p>In preparation for the new NPDES MS4 permit for the lower Rio Grande, the City of Las Cruces has been meeting once a month with other MS4 entities to discuss possible shared program requirements. The following MS4s have been in attendance: New Mexico State University, the City of Las Cruces, the New Mexico Department of Transportation, Doña Ana County, the City of Anthony, and the City of Sunland Park, Santa Teresa and The Town of Mesilla.</p> <p>Program components such as stormwater quality sampling and education and outreach are areas that may benefit from a shared collaborative approach. CLC staff have also attended meetings in the Middle Rio Grande Albuquerque area to see how MS4s are handling their shared permit responsibilities.</p>

MCM #2 Public Participation and Involvement

BMP/YEAR 10	STATUS/DESCRIPTION
-------------	--------------------

<p>BMP 2.1 Public Notices and meetings Publish public notice of the SWMP and Annual Report Present the SWMP annual report to the City Council</p>	<p>The cities' Storm Water Management Plan (NOI) revisions and Annual Report are available on the City's website at the following address: http://www.las-cruces.org/departments/public-works/project-development/stormwater Public Notice was published in the Las Cruces Sun News.</p>
<p>BMP 2.2 Stormwater report line Publicize the report line</p>	<p>The report line was posted on brochures and on the Stormwater web page.</p>
<p>BMP 2.3 Website Availability of the SWMP and NOI Maintain and update web page.</p>	<p>The Stormwater Web Page is periodically updated and revised. http://www.las-cruces.org/departments/public-works/project-development/stormwater</p>
<p>BMP 2.4 Community Clean-up Activities Sponsor and advertise community clean-up event</p>	<p>Keep Las Cruces Beautiful Program – Dept. - Parks & Recreation, Toss No Mas 10/14/17 Great American Cleanup 4/14/18 <i>(See appendix B for data)</i></p>

MCM #3 Illicit Discharge Detection and Elimination

BMP/YEAR 10	STATUS/DESCRIPTION
<p>BMP 3.1 Visual Inspection Screening Respond to citizen complaints of illicit discharges Visually inspect for discharges during NFIP inspections. Develop and implement tracking system for reported illicit discharges.</p>	<p>Currently the City responds to citizen complaints of illicit discharges. Departments that are involved in responding to complaints include: Utilities and Public Works. Storm drain infrastructure is inspected by drop inlet maintenance crews, Blue Stakes, GIS mapping and NFIP inspections. The City's Industrial Pollution Prevention Inspectors are responsible for responding to and recording illicit discharges.</p>
<p>BMP 3.2 GIS Mapping Map Outfalls adjacent to EBID structures BMP 3-2 cont. Map U.S. waters within the city.</p>	<p>Many outfall structures were mapped using GIS technology but are still an ongoing project. <i>Four basins within the city have been mapped using survey grade equipment. Points and polygons were imported into an existing GIS stormwater database. See Figures 7-8 for survey locations.</i></p>
<p>BMP 3.3 Ordinance to Remove/Correct Illicit Discharges</p>	<p>The City's Utilities, Environmental Services section manage four programs that include: regulatory compliance, environmental programs and projects,</p>

<p>Use revised municipal code to eliminate illicit discharges.</p>	<p>laboratory services, and pollution prevention. Industrial Inspectors that are responsible for detecting and correcting illicit discharges work in the pollution prevention program area. The pollution prevention team includes backflow prevention, grease interceptor, and industrial pretreatment programs. http://www.las-cruces.org/departments/utilities/regulatory-environmental-services</p>
<p>BMP 3.4 Household Hazardous Waste Recycling Accept Household Hazardous Waste at the City’s Recycling Center http://www.scswa.net/</p>	<p>Fully Implemented AMADOR AVENUE RECYCLING CENTER 2865 W. Amador Ave We accept paints, stains or any item considered ignitable, poisonous or corrosive), florescent light bulbs, E-Scrap (computers and other electronics) and tires (for a fee, depending on size). All the recyclables listed above PLUS: old appliances and scrap metal, household hazardous waste (household cleaners, pesticides, herbicides, motor oil, cooking oil, antifreeze, rechargeable batteries, vehicle batteries.</p>
<p>BMP 3.5 Septic Tank Identification and Prioritization Design and construct new sewers as funds allow.</p>	<p>Ongoing Utilities-New Connections 680 North Motel Boulevard Las Cruces, NM 88007 (575) 528-3657 A septic tank ID and prioritization study was done in 2007 to establish a listing of all septic tanks still in use within the City. The City of Las Cruces identified an estimated 1880 parcels located within the existing City limits that are on septic tank systems and not served by the City’s wastewater collection and treatment system. The City is using GIS software to record, track and update septic system information. http://www.las-cruces.org/departments/utilities/technical-support/sewer-installation-projects</p>

MCM #4 Construction Site Storm Water Runoff Control

BMP/YEAR 10	STATUS/DESCRIPTION
<p>BMP 4.1 Plan Review Review Erosion control and Sediment Control Plans</p>	<p>The City of Las Cruces has a plan review team that reviews erosion control plans that are required by the City’s design standards. (<i>See Design Standards for details</i>) The City of Las Cruces requires an erosion control plan for construction activities that disturb 1 acre or more land. The erosion control plan is a required under City Design Standards (Sec. 32-104. Specific analysis requirements section D.) City Ordinance, Article</p>

	<p>III, Stormwater Management, Sec. 34-125 Purpose https://www.municode.com/library/nm/las_cruces/codes/land_development_code?nodeId=PTIIIDECO_CH32DEST</p>
<p>BMP 4.2 Inspection and Enforcement Implement new inspection and enforcement procedures. Evaluate feasibility of construction Inspector position contract.</p>	<p>New inspection and enforcement procedures have been implemented for construction stormwater compliance as well as municipal stormwater ordinance compliance. Inspection books were created for logging in inspection details and escalation processes. A Codes Enforcement Officer has been assigned to work mainly on stormwater inspections and compliance. A full time Environmental Compliance Inspector whose responsibilities are monitoring construction sites for stormwater pollution has been implemented. This full-time inspector focuses mainly on EPA-NPDES permit requirements as well as local municipal ordinances. Areas such as erosion and dust associated with construction activity has been an important area of concern here in the arid southwest. http://www.las-cruces.org/departments/community-development/building-and-development-services/construction-pollution-prevention</p>
<p>BMP 4.3 Public Reports of Construction Problems Post information on website encouraging public reporting of construction site problems.</p>	<p>Implemented http://www.las-cruces.org/departments/community-development/building-and-development-services/construction-pollution-prevention</p>

MCM #5 Post-Construction Storm Water Management in New Development/Redevelopment

BMP/YEAR 10	STATUS/DESCRIPTION
<p>BMP 5.1 Structural BMPs Enter existing ponding areas into GIS. Update GIS ponding area inventory as plans are stamped "Permit Set".</p>	<p>Fully Implemented A pond inventory and inspection book was developed and is used during the annual stormwater infrastructure inspections.</p>
<p>BMP 5.2 Open Space Program Arroyo Plan, Landscape ordinance and the Cruces Trail Systems.</p>	<p>Arroyo Plan has been adopted by the City Council. Landscape ordinance was developed and is still under review. Parks & Recreation Master Plan to be adopted will contain park/pond and trail systems.</p>
<p>BMP 5.3 Capital Improvement Program Include evaluation of water quality in design contracts.</p>	<p>Water quality evaluation in design contracts not implemented. More discussion on evaluating water quality in design contracts although there is still no policy or requirement. Implementing rainwater harvesting where feasible.</p>
<p>BMP 5.4 MS4 Operation and Maintenance program Continue operation and maintenance program</p>	<p>Public Works inspectors meets with street maintenance regularly to make sure storm drains and infrastructure are maintained. New inspection forms and spreadsheets were developed to track maintenance of stormwater infrastructure. Munis software is now being used to submit and track work orders for stormwater infrastructure maintenance.</p>
<p>BMP 5.5 Low Impact Development (LID) Education Distribute LID brochure to developers and their engineers. Place LID brochure in dispenser where construction plans are submitted for review. If feasible, host a LID workshop with NMSU and DAC.</p>	<p>Meetings to discuss LID and green infrastructure were established through the Community Development Department. Currently no guidance documents or literature has been created for LID practices.</p>

MCM # 6 Pollution Prevention/Good Housekeeping for Municipal Operations

BMP/YEAR 10	STATUS/DESCRIPTION
<p>BMP 6.1 Good Housekeeping Practices Implement Good Housekeeping Procedures. Revise the procedures when activities change.</p>	<p>Material safety data sheets are kept for all stored chemicals, personnel are trained in proper handling and storage of potentially hazardous substances. Records are kept identifying to assure substances are properly stored and handled. Safety and Good housekeeping procedures are handled by the Risk Management Section. http://www.las-cruces.org/departments/risk-management</p>
<p>BMP 6.2 Hazard Communication Program Train employees</p>	<p>Employee training is tracked and recorded by individual departments. The Risk Management Department is responsible for any training that involves safety and hazards in the municipal environment. Currently, each department within the City tracks their employee training history and notifies the employee when it is time to renew certifications or take refresher courses. Training for employees is tracked using Munis software by Tyler technologies.</p>
<p>BMP 6.3 Municipal Training</p>	<p>Training is offered to municipal employees on an as needed basis. For example, when the new 2017 Construction General Permit was released, training was given to employees to notify them of changes and new regulatory requirements. Training will also be offered to municipal employees involved with construction stormwater compliance as well as any changes or revisions to the City’s stormwater ordinance.</p>
<p>BMP 6.4 Pesticide, fertilizer, and herbicide Management</p> <p>Require city applicators to be appropriately licensed</p> <p>The methods mentioned help reduce chemical use in areas where citizens and event users gather.</p>	<p>All City workers that apply pesticides, fertilizers, and herbicides are licensed by the New Mexico Department of Agriculture (NMDA) Pesticide Compliance Section. Listed below are some methods of pest management currently practiced within city parks/trail areas and ballfields</p> <ul style="list-style-type: none"> • Biological Control – using natural enemies to control the pest, such as using salt cedar leaf beetle to manage salt cedar. • Cultural controls – proper mowing, irrigation, fertilization and aeration are examples for turf management. • Mechanical and physical controls – pulling and

<p>BMP 6.4 Pesticide, fertilizer, and herbicide Management Cont.</p> <p>Require city applicators to be appropriately licensed.</p> <p>Parks & Recreation does not track the locations and amount of pesticides, herbicides, and fertilizers used. Only the amounts purchased and used are documented. Ideally, locations and quantity of chemicals should be documented using existing GIS technology for data input and reporting.</p>	<p>hoeing weeds is an example, as is the use of mulch for weed control. Burning weeds is also an option staff has used in the past</p> <ul style="list-style-type: none"> • Chemical control – use only the most selective product and applied in a way that minimizes harm to people, non-target species, and the environment. <p>Staff responsible for maintaining the parks and landscapes in the City of Las Cruces utilize all the above approaches. We have a turf management program that emphasizes good cultural management practices – regularly scheduled mowing, aerating, fertilizing, and proper irrigation. Mechanical and physical controls are also used. For example, decorative landscapes in parks and medians are mulched with gravel to reduce the amount of weed seeds that germinate.</p> <p>Parks and Recreation is also testing new products that can help control problem weeds. We have tested Avenger (chemical control), Red Dragon Vapor Torches (mechanical control), and Puncturevine Weevils (biological control) to determine how effective these products are in weed management.</p>
--	--

Implementation Status

A. General Summary

This past year the City of Las Cruces has continued to carry out the activities and goals of the cities' Storm Water Management Plan (SWMP).

The plan was submitted in compliance with the Environmental Protection Agency's (EPA) Phase II Storm Water Final Rule (64 FR 68722, 8Dec99) to improve storm water quality in accordance with the Clean Water Act of 1972. The program will serve to develop, implement, and enforce a storm water management program designed to reduce the discharge of pollutants to the maximum feasible extent possible. The EPA has identified six minimum control measures which must be specifically addressed within this plan. These six minimum areas are listed below and involve several City departments. This report documents the results of the past year's efforts.

- 1) Public Education and Outreach on Storm Water Impacts.
- 2) Public Participation and Involvement
- 3) Illicit Discharge Detection and Elimination

- 4) Construction site Storm Water Runoff Control
- 5) Post-Construction Storm Water Management in New Development/Redevelopment
- 6) Pollution Prevention/Good Housekeeping for Municipal Operations

B. Program elements changed or refined since previous report or permit application.
Include a summary of any changes made in accordance with Part 5.5 of the permit.

There are no changes to the Stormwater Management Plan since the city revised the Stormwater Management Plan in 2009. The SWMP will be revised again in conjunction with the new MS4 permit that is supposed to be released in 2018.

C. Status of Measurable Goals (See tables before each minimum control measure)
i. The measurable goals completed during the reporting period

ii. An explanation for any measurable goals scheduled for completion during the reporting period that were not completed. (Any modified goals/deadline should be listed in item 5, below.)

Measurable goals that were not completed are: (See BMP Summary for items marked in red.)*

BMP 2-1 Public Notices and meetings, Annual Report was not presented to the City Council
A Public Notice was published in the Las Cruces Sun News.

2. Overall compliance with permit conditions.

a. Assessment of the appropriateness of the identified BMPs.

Factors to consider in determining appropriateness include, but are not limited to, effectiveness for local population, pollution sources, receiving water concerns, and integration with local management procedures. BMPs are appropriate and effective for the local population, types of pollutants and current receiving waters; considering that the Rio Grande is no longer a natural living river due to physical manipulation and agricultural dominance. The city does quite well at managing its MS4 and runoff and contributes minimal pollutants to the Rio Grande.

b. Progress towards achieving the statutory goal of reducing the discharge of pollutants to the Maximum Extent Practicable (MEP). Include a general discussion on your assessment of the program effectiveness at protecting water quality. Progress towards reducing the discharge of pollutants to the Maximum Extent Practicable (MEP) is met mainly through program maintenance, community outreach and participation and best management practices. Each year the city strives to reduce pollutants that are generated from anthropogenic sources such as industrial, commercial and individual activities. Although the city has made great progress towards reducing pollutants from these sources it needs to do more particularly with erosion and sediment management. Sediment and erosion caused by construction activities such as grading and grubbing causes lack of soil stabilization which often leads to discharge into the city's MS4 during storm events. Undeveloped or unstable lots are also contributing to excessive erosion and sedimentation. More needs to be done in the areas of site management and stabilization as well as enforcement. The city is looking at revising its stormwater ordinance to include language that would achieve more accountability for sites that contribute pollutants to the MS4.

3. Results of information collected and analyzed, if any, during the reporting period, including any monitoring data used to assess the success of the program at reducing the discharge of pollutants to the MEP.

Discharge monitoring is not a requirement under the permit. However, if you did collect any monitoring data for stormwater discharges within your jurisdiction, or if any program element included data collection of some sort, you must submit a short summary of the information and any analysis completed. Examples of data sources include survey/polling results, miles of riverbank cleaned up, number of hits on a website before and after a public education campaign, etc. (Data recorded under Item 1.c, Measurable Goals, does not need to be repeated here.)

A water quality baseline has not been established for quantifying reductions of pollutants in the MS4. Discussions have been made with the MS4 Cooperative to establish monitoring locations along the Rio Grande as suggested in the draft MS4 permit that has yet to be finalized. Although there is a TMDL for E. coli in the Lower Rio Grande initial sampling/monitoring conducted with the Paso del Norte Watershed Council found no correlation of exceedances directly caused by the MS4. Issues of immediate priority for managing stormwater pollution within the urbanized area include reducing erosion, trash and sedimentation within the MS4. Programs have been developed to address these concerns from several departments. Parks & Recreation has Keep Las Cruces Beautiful program that includes clean up events like the Great American Cleanup and Tos no Mass. The Community Development Department manages the Wind and Erosion Ordinance through construction site inspections and plan reviews. Public Works inspects and maintains all stormwater infrastructure and manages the NPDES permit. Improvements with digital work orders and maintenance will allow us to quantify and measure progress in stormwater pollution reductions.

4. Brief summary of stormwater activities you plan to undertake during the next reporting cycle (including an implementation schedule).

Provide a short summary based on your existing Stormwater Management Program implementation schedule. If any changes are planned from the original descriptions provided in the application or previous reports, they should be summarized in Item 5. The activities for the next reporting cycle will stay the same. Adopt Municipal Code Revisions. For the next reporting cycle, we plan to add weather stations and begin a basic stormwater monitoring program and flood hazard warning system. Continued efforts with GIS establishing a comprehensive database that documents storm drainage facilities and infrastructure is another important activity that is ongoing. City staff have been meeting with other MS4 managers within the urbanized area to discuss and prepare for the next Lower Rio Grande permit. Possible collaboration on program elements such as stormwater sampling and education and outreach have been discussed. City staff will continue to meet with other MS4's to discuss options for watershed based planning. Delays in the new General Permit have resulted in lack of momentum. Meetings will most likely resume when the new General Permit becomes final.

5. Proposed changes to the program area.

a. Changes to BMPs

b. Changes to Measurable Goals

See revised BMP chart, pages 11-15

6. Statement, if not included in previous reports or application that you are relying on another government entity to satisfy some of your permit obligations (if applicable)

Another entity may be relied on to perform requirements of your MS4 permit. However, as the permittee, you remain liable for compliance with the terms of the permit if the requirements are not fulfilled. You must complete this Annual Report for the geographic areas covered under your permit, for all program areas, even if one or more program elements is being performed by another entity. (However, if you are performing a program element for another permittee, you do not need to include that activity in this report.)

The City of Las Cruces is not currently relying on any other government entity to satisfy permit obligations.

7. A summary of the number and nature of inspections and formal enforcement actions performed.

Site-specific information may also be included, but is not required. (Information recorded under Item 1.c, Measurable Goals, does not need to be repeated here.)

See Appendix H.

8. Documentation on compliance with public access, review, and comment provision of Part 1.3 of the permit.

Describe when and how the public had the opportunity to review and comment on the Annual Report and Stormwater Management Program. Summarize any public comments and your response to those comments.

A public notice will be sent out to two media sources as well as be posted on the stormwater web page for viewing. Comments are encouraged.

<http://www.las-cruces.org/departments/public-works/project-development/stormwater>

Signature of Permittee

I certify under penalty of law that this document and all attachments were prepared under my direction or supervision in accordance with a system designed to assure that qualified personnel properly gathered and evaluated the information submitted. Based on my inquiry of the person or persons who manage the system, or those persons directly responsible for gathering the information, the information submitted is, to the best of my knowledge and belief, true, accurate, and complete. I am aware that there are significant penalties for submitting false information, including the possibility of fine and imprisonment for knowing violations.

Signature of Permittee (legally responsible person)

Date Signed:

Name & Title (printed):

Dr. Jorge A. Garcia, Ph.D., P.E.
Interim Public Works Director
City of Las Cruces



Figure 4: Outreach Bus Banner Design



Figure 5: New Mascot TADD

The City of Las Cruces participated in the Water Festival, April 19, 2018 to promote stormwater pollution prevention and watershed education for 3rd and 4th graders. Students learned about water resources topics with hands-on interactive booths. Attendance was approximately 1500 students. An interactive watershed model was used to illustrate how stormwater travels and picks up pollutants. Children were taught about what activities they can do to minimize pollutants in their watershed.



Figure 6: CLC staff present floodplain model and watershed activities to students.

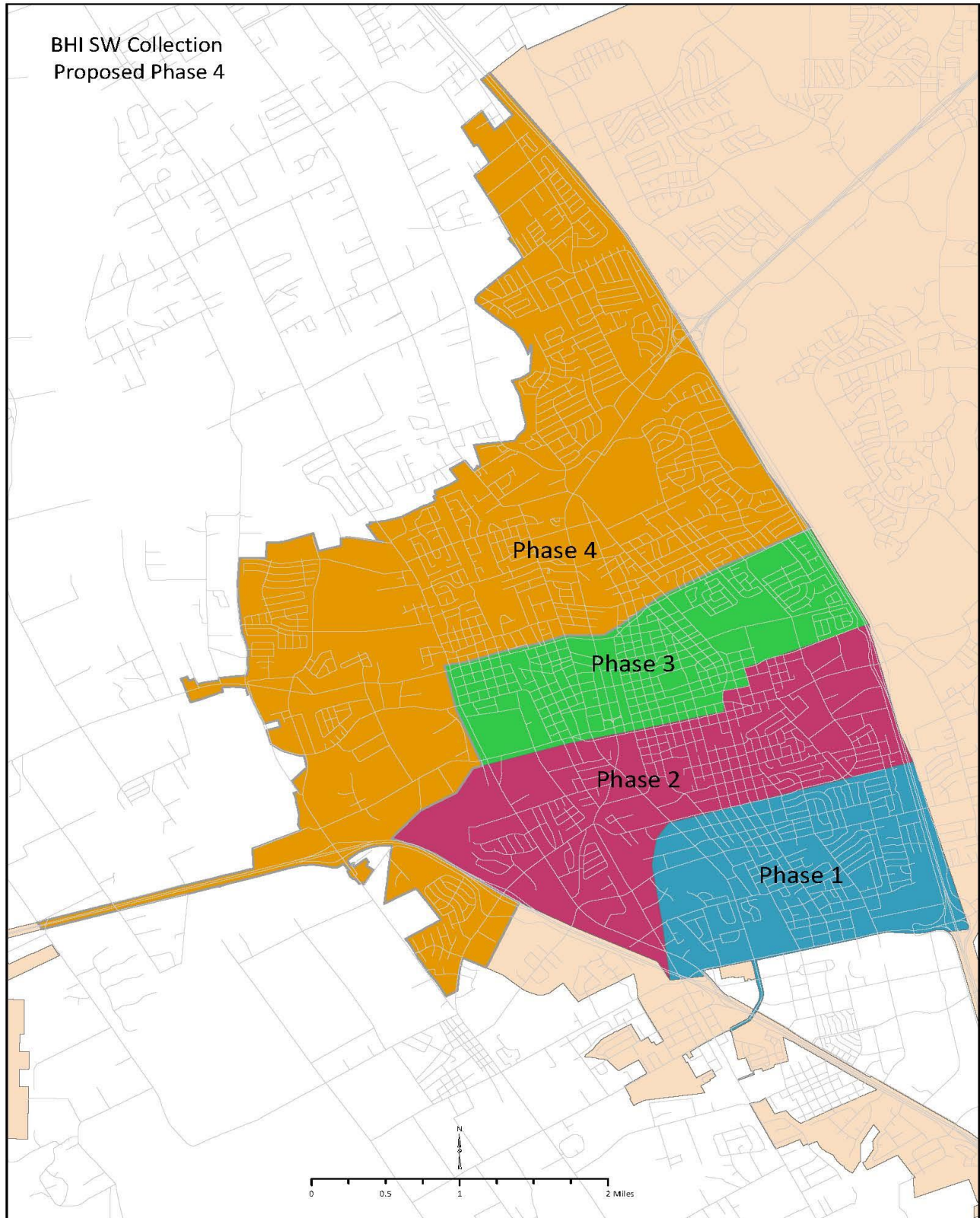


Figure 7: Bohannon Huston Stormwater survey Phases 1-4

Recycling Data

<http://www.scswa.net/>

Curbside recycling for CLC in 2015 generated **6,896** tons of single-stream recyclables.

Curbside recycling for CLC in 2016 was **6,612.73** tons of single-stream recyclables.

Curbside recycling for CLC in 2017 was **4554.25** tons of single-stream recyclables.

The reduction in single stream recycling over the past two years is the result of China no longer accepting low-quality recyclables. The Las Cruces recycling program is now transitioning their recyclables processing through domestic markets that focus higher-quality recyclables. This switch to domestic markets is now focused on only accepting the following recyclables known as the “Fab 5”

1. Clean corrugated cardboard
2. White printer paper
3. Plastic #1
4. Plastic #2
5. Aluminum/Tin

<https://scswa.net/focus-recycling-efforts-on-the-fab-5/>

Stormwater Pollution Prevention Plan

South Central Solid Waste Authority (SCSWA) owns and operates the Amador Avenue Transfer Station (Transfer Station) and operates the Amador Recycling Center (Recycling Center). The operations at both of these facilities are considered industrial activities that have the potential to impact stormwater quality. Therefore, these facilities are required to have a National Pollutant Discharge Elimination System (NPDES) permit. SCSWA has applied for coverage under the Multi-Sector General Permit for Stormwater Discharges Associated with Industrial Activity (MSGP) (effective June 4, 2015). This Stormwater Pollution Prevention Plan (SWPPP) is required by the MSGP and its purpose is to describe SCSWA’s program for complying with all of the requirements in the MSGP.

Stormwater Pollution Prevention Plan for Amador Avenue Transfer Station is available [here](#).

Stormwater Pollution Prevention Plan for Corralitos Landfill is available [here](#).

Stormwater Pollution Prevention Plan for County Collection/Convenience Centers is available [here](#).

Great American Cleanup Data

<http://www.las-cruces.org/departments/parks-and-recreation/parks/community-wellness/keep-las-cruces-beautiful>

The 2018 GAC collected 1146 bags of trash total pounds **23,020** at **20lb per bag** that adds up to **11 Tons**. Also, we had six roll-off containers placed around the city that collected **11.07 Tons of trash**. The Toss No Mas event is scheduled to occur in October 2018.

Nearly 2,000 take part in community cleanup

Spencer Taylor, For the Sun-News

Published 9:30 a.m. MT April 15, 2018 | Updated 3:37 p.m. MT April 15, 2018



(Photo: Robin Zielski / Sun-News)

The "Great American Cleanup," an initiative of Keep Las Cruces Beautiful, and "The Big Event," sponsored by New Mexico State University, coordinated efforts this year, leading to a significant increase in participation. An estimated 1,900 people helped clean trash, paint over graffiti, and provide landscaping, at sites across the city.

The Associated Students of NMSU reported 1,009 cleanup volunteers participating in "The Big Event" while "Keep Las Cruces Beautiful" reported 900.

The scene as 8 a.m. approached at Preciado Park outside O'Donell Hall on NMSU campus was much like an Aggie sports rally. The NMSU band provided live ensemble music complete with a drum kit, as a thousand student volunteers cheered during sign-in. Student volunteers posed for pictures with friends in front of a large "Big Event" backdrop, then enjoyed a burrito breakfast courtesy of event sponsors, Rudy's, Albertson's, Toucan, and Dunkin' Doughnuts, before heading out for a day of community cleanup work.

MORE: [Trash containers available during Great American Cleanup \(/story/news/local/2018/04/13/trash-containers-available-during-great-american-cleanup/513226002/\)](/story/news/local/2018/04/13/trash-containers-available-during-great-american-cleanup/513226002/)

"When you get this many people out, the work is a lot easier," ASNMSU Community Outreach Director Adrian Llanez said. "We usually average around 900 participants for this event, but we have over a thousand this time."

Each cleanup site averages just over 20 on-site volunteers, with some requiring as many as 50. The Picacho Mountain neighborhoods were recently added to the cleanup, and require 80 volunteers. "We're doing our best to show we care about the community and we want to be out there helping out. There's been a little bit of a disconnect there and we're trying to mend that bridge by showing how NMSU student's care," Llanez said.

Buy Photo



Daniel Saucedo, 12, Yareli Ruiz, 23, and Alma Chavez, 24, members of Mujeres y Hombres Activos y Revolucionarios, carry a box of trash out of the area behind Mister Car Wash on Kansas Avenue on Saturday, April 14, 2018 during the Great American Cleanup. (Photo: Robin Zielski / Sun-News)

<https://www.lcsunnews.com/story/news/local/2018/04/15/keep-las-cruces-beautiful-great-american-clea...> 4/16/2018

Water Conservation/Lush and Lean Presentations-2018

<http://www.las-cruces.org/departments/utilities/water-conservation>

Lush and Lean Presentations -2018		
Date	Workshop	Attendance
03/01/18	Climate Outlook	35
03/08/18	Soils	52
03/15/18	Landscape Design	37
03/22/18	Weeds	46
03/29/18	Vegetables	49
04/05/18	Irrigation II	41
05/03/18	Propagation	39
05/10/18	Stormwater Harvesting	31
05/17/18	Bugs!	30
05/24/18	Trees	32
05/31/18	Pruning	26
	Total attendance	418
	# workshops	11
	Avg attendance	38
	Max Attendance	52
	Min Attendance	30
Miscellaneous Out-Reach - 2018		Attendance
04/07/18	Volunteer Fair	53
04/21/18	Earth Day	172
05/15/18	Spring Stroll in the Demonstration Garden	150

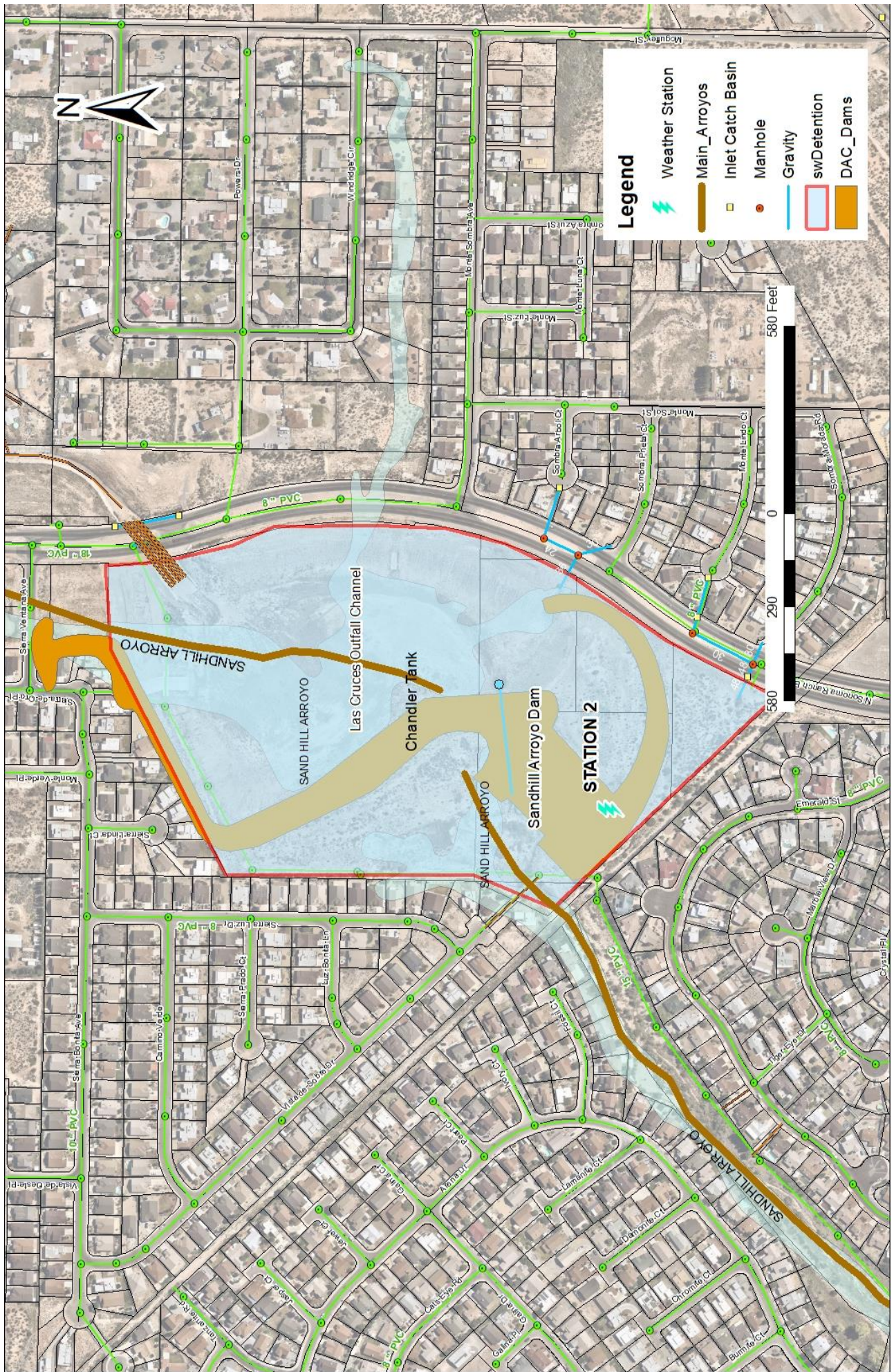
Weather Stations

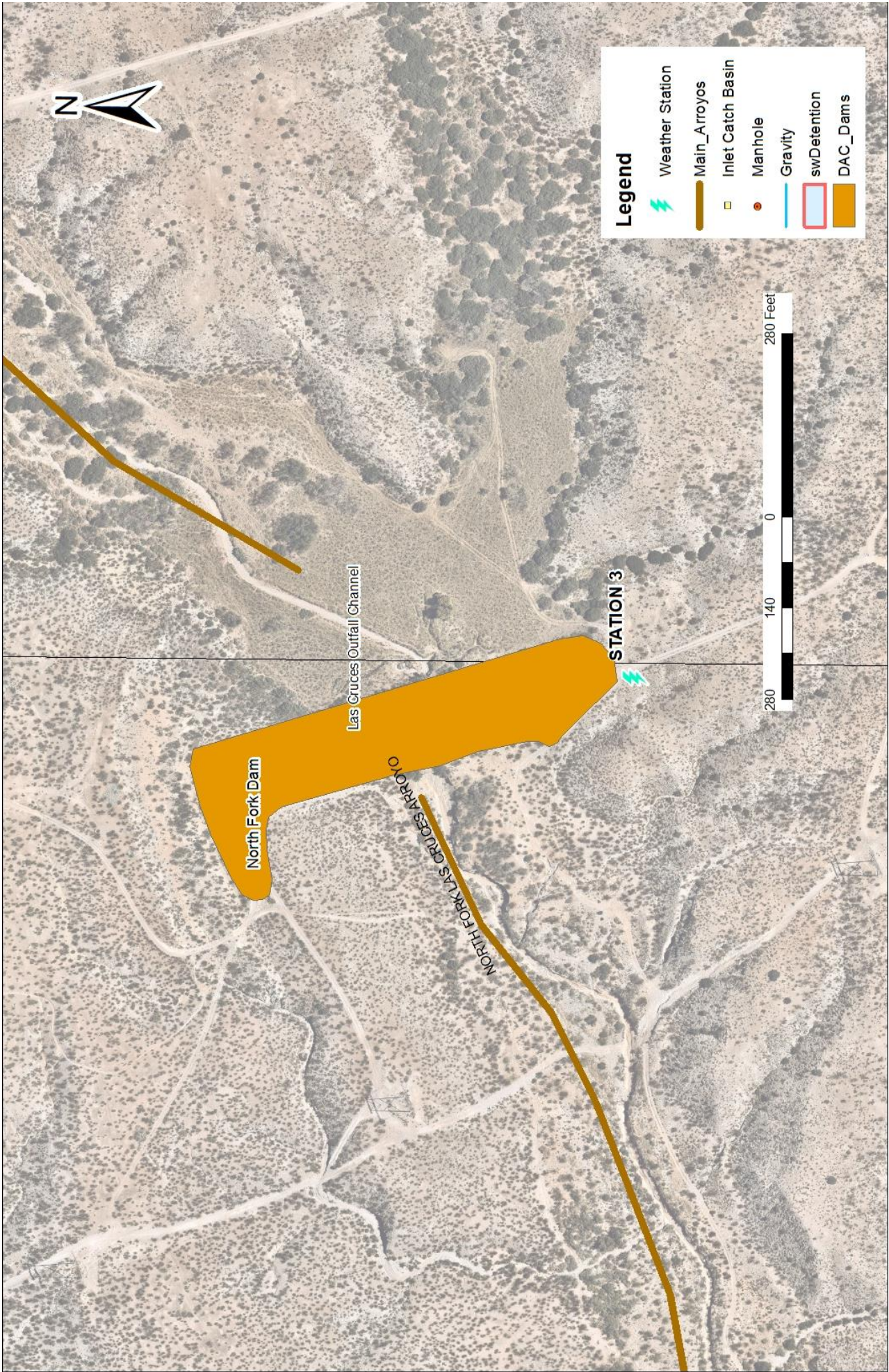
The City of Las Cruces is installing 7 rainfall monitoring weather stations in conjunction with Doña Ana County and the National Weather Service to predict flooding and warn residents who may be in danger. The rainfall gauges all send data to a central tower on A Mountain east of Las Cruces, and a transmitter on that tower relays the information to the Doña Ana County Government Center, where it's posted onto the Internet at <https://donaana.onerain.com>

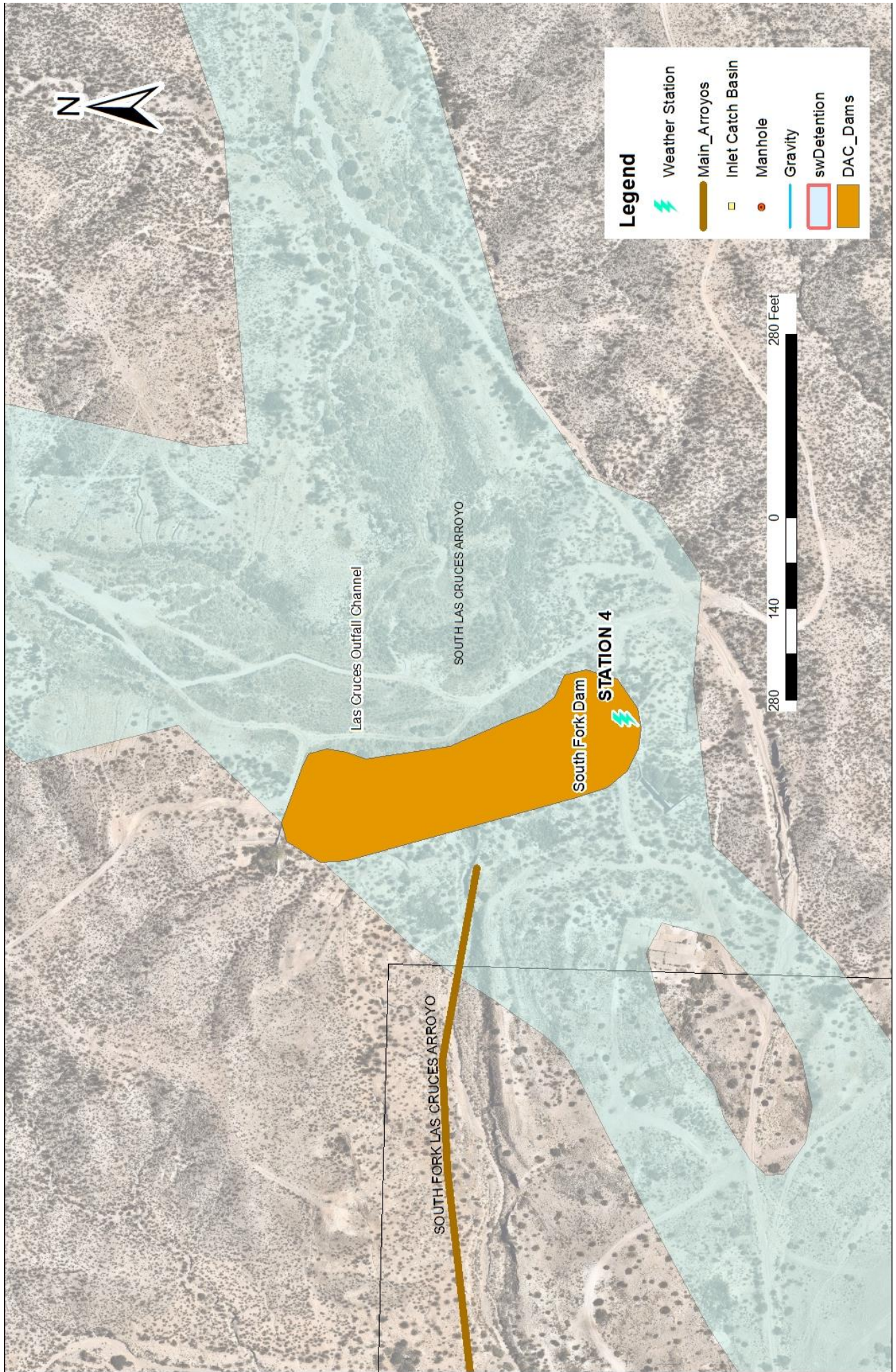
Upon full implementation – which is estimated to be completed in 2017-2018 there will be 30 remote weather stations, stream gauges and water-level monitoring stations located throughout Doña Ana County, all of which will be linked to the National Weather Service and to other gauges in southern New Mexico and El Paso County. <https://donaanacounty.org/content/new-rainfall-monitoring-system-aid-flood-warnings>

Another benefit of having these weather stations besides public safety is watershed management. Understanding weather patterns and gathering rainfall data will allow more efficient management and maintenance of stormwater infrastructure facilities. Data retrieved from these weather stations will aid in inspections, erosion prevention, maintenance and arroyo restoration.

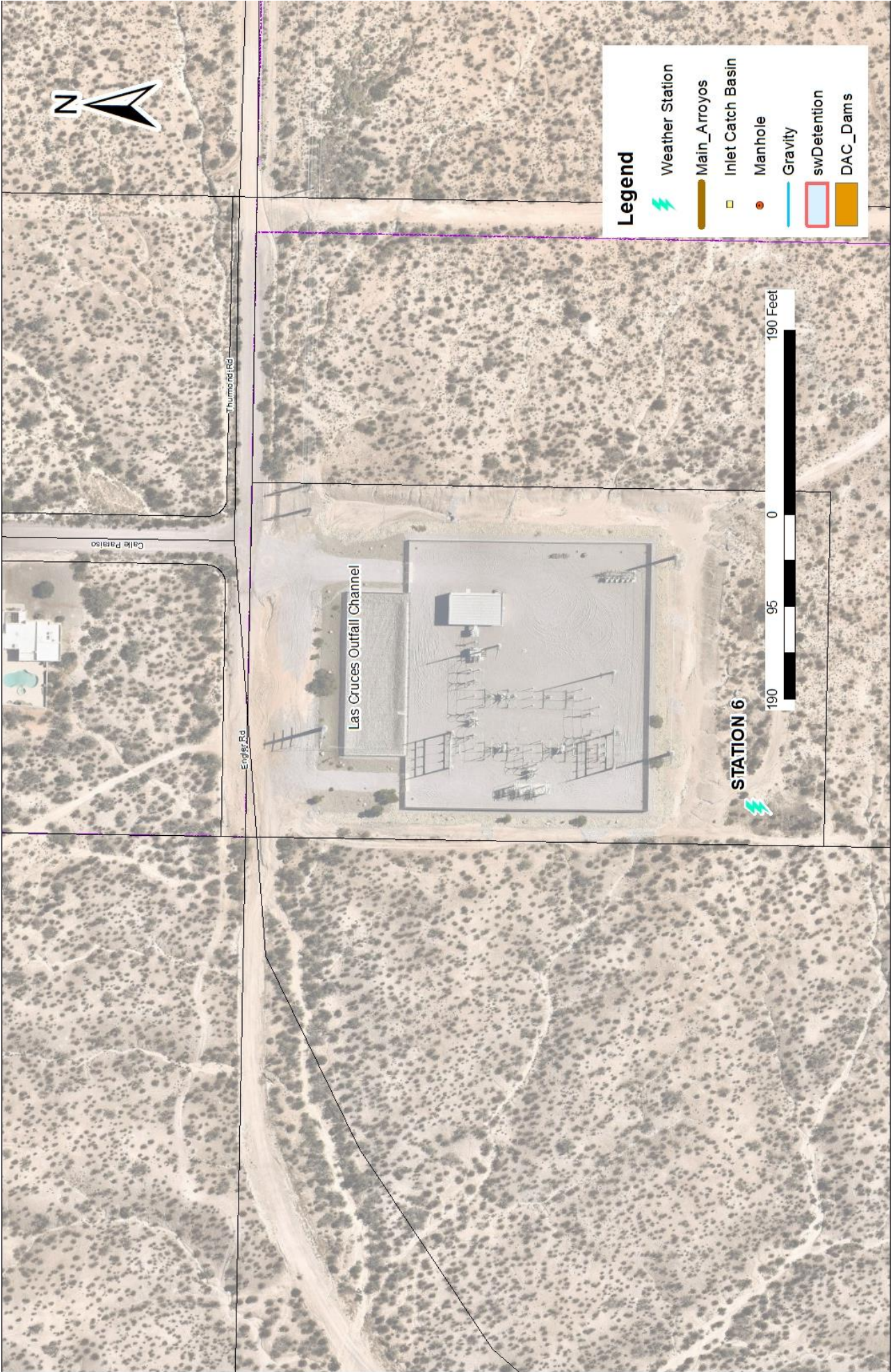


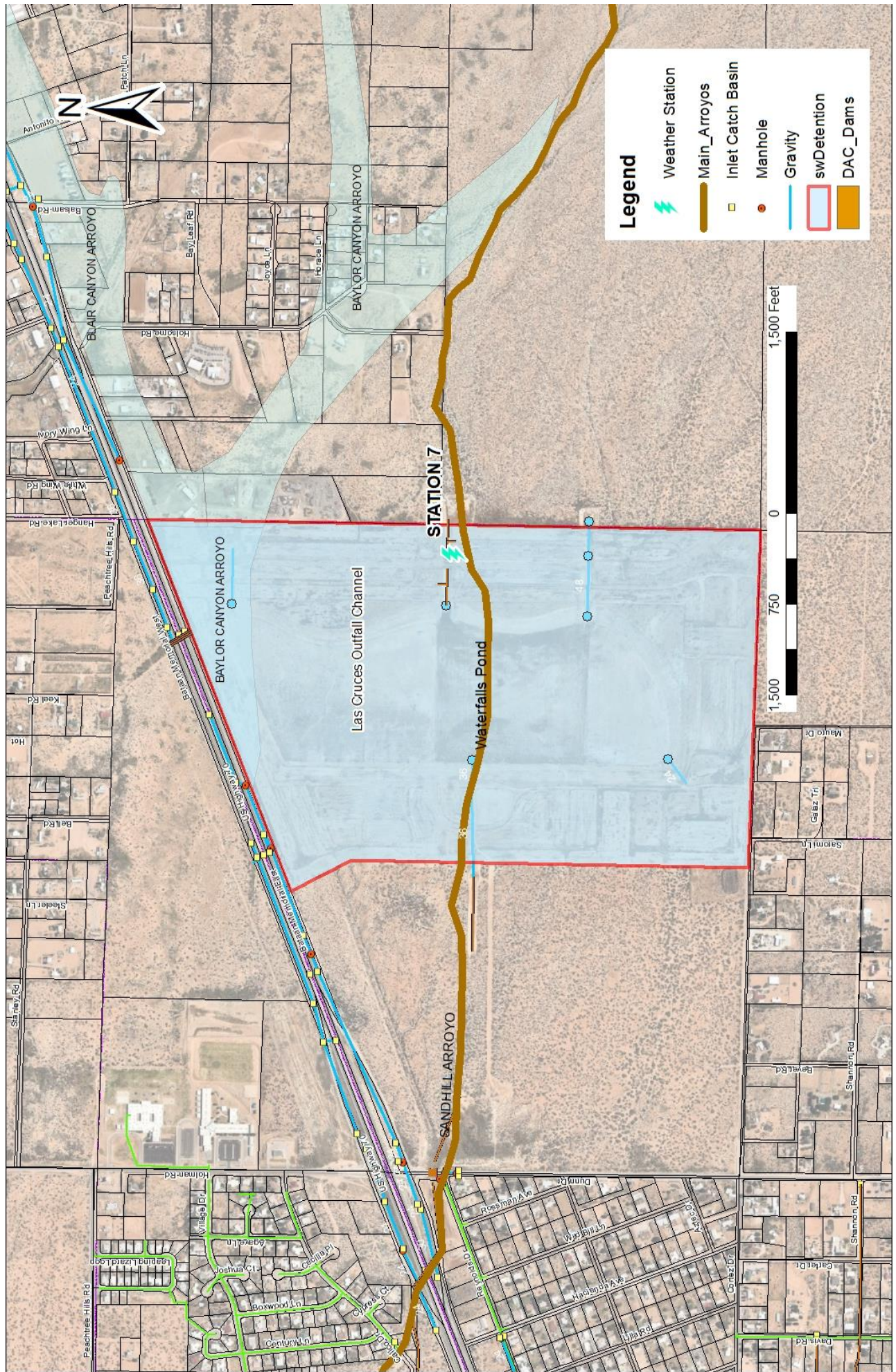


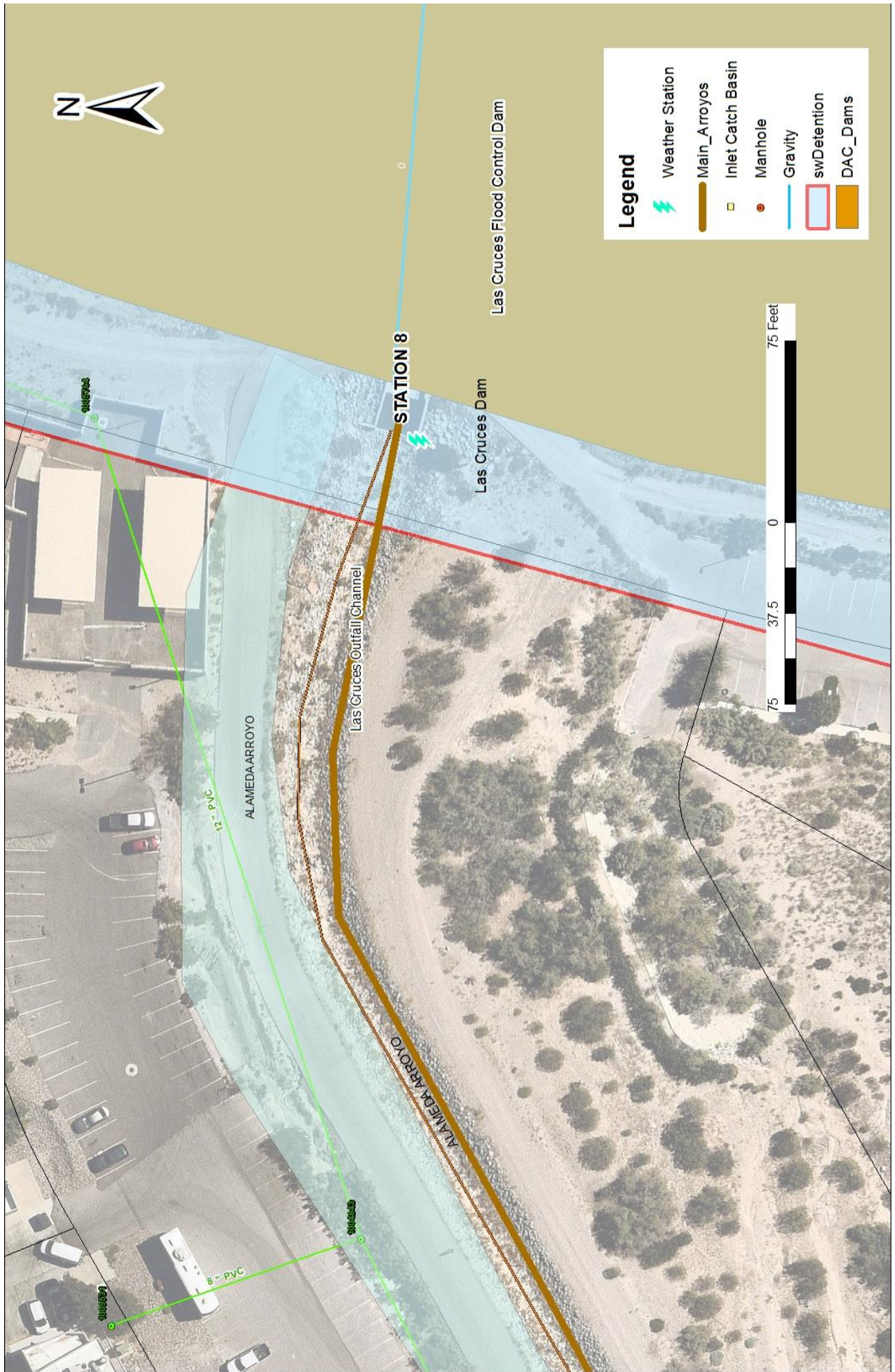












Media Distribution

The following tables illustrates the media distribution of educational and outreach materials from 2017 to 2018.

Distributions		
Event Name	Home Builders Association	Quantity of Each
Date	3/4/2017	
Recipient	Public	
Outreach Material	Brochures/Constr.Guides	25
	Pet Waste Disp.	25
	Watershed Books	25
	Discover Rio Bravo	25
	Xeriscape brochure	25
	Waterwise guide	25
	SID Pens	25
	Only Rain in Drain Card	25
Event Name	Farmer's Market	Quantity of Each
Date	3/29/2017	
Recipient	Public	
Outreach Material	Watershed Books	2
	Pet Waste Disp.	6
	Bic Pens	15
	Discover the Waters NM	7
Event Name	Front Lobby, City Hall	Quantity of Each
Date	4/17/2017	
Recipient	Public	
Outreach Material	Brochures/Citizens Guides	190
Event Name	Community Development, permit lobby	Quantity of Each
Date		
Recipient	Public	
Outreach Material	Brochures/Constr.Guides	130
	Brochures/Citizens Guides	22
	Brochures/Constr.Guides	130
Event Name	Farmer's Market	Quantity of Each
Date	5/3/2017	
Recipient	Public	
Outreach Material	Brochures/Constr.Guides	
	Pet Waste Disp.	75
	Discover the waters of NM	
	Yo-Yo	
	Bic pens	

Distributions			
Event Name	Staff	Quantity of Each	
Date	5/11/2017		
Outreach Material	Pens	5	
Event Name	Cesar Chavez Elementary School/Sunrise Elementary	Quantity of Each	
Date	5/12/2017		
Recipient	Cesar Chavez Elementary School	450	
Outreach Material	Watershed Books		
Event Name	Mesilla Park Elementary	Quantity of Each	
Date	5/25/2017		
Recipient	Mesilla Park Elementary School	175	
Outreach Material	Yo-Yo		
Event Name	National Night out	Quantity of Each	
Date	8/1/2017		
Recipient	Public	75	
Outreach Material	Pet Waste Disp		
Event Name	Nevada Neighborhood Green Infrastructure Project	Quantity of Each	
Date	8/27/2017		
Recipient	Public	6	
Outreach Material	Watershed Books		
	Yo-Yo		7
	Bic Pens		10
	Brochures/Citizen Guides		6
	Pet Waste Disp.		6
	Kids Activity Workbooks	6	

Distributions		
Event Name	Christmas Tree Lighting Ceremony downtown Plaza de Las Cruces	Quantity of Each
Date	12/2/2017	
Recipient	Public	
Outreach Material	Yo-Yo	75
	Pens	40
	Watershed Books	30
	Finger Puppets	103
	Bags	86
Event Name	CGP Training, NMED	Quantity of Each
Date	3/21/2018	
Recipient	Community Development	
Outreach Material	Brochures/Constr. Guides	40
	Erosion/Dirt Notice	37
Event Name	Cesar Chavez_Sunrise Elementary School Presentation	Quantity of Each
Date	5/11/2018	
Recipient	LCPS	
Outreach Material	Watershed Books	150
	Temp. SID Tattoos	150
	Finger puppets	75
Event Name	Water Festival	Quantity of Each
Date	4/19/2018	
Recipient	LCPS	
Outreach Material	Watershed Books	150

Codes Enforcement Data

“These are the numbers we have for January 1, 2017 - October 24, 2017. We changed over to Tyler New World CAD system late October. We are unable to track this specific violation with this system due to limited space. MS4 and wind erosion issues are consolidated into our Zoning category on the CAD. We are developing a way to track this but as of now we do not have this information.

MS4 Violations- 67; Citations-0”

MS4 Presentation Update